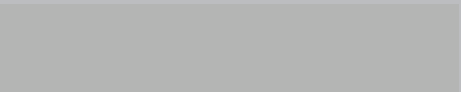
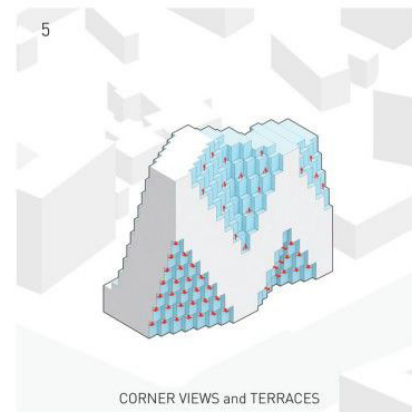
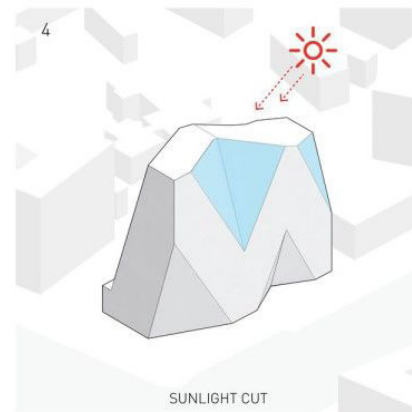
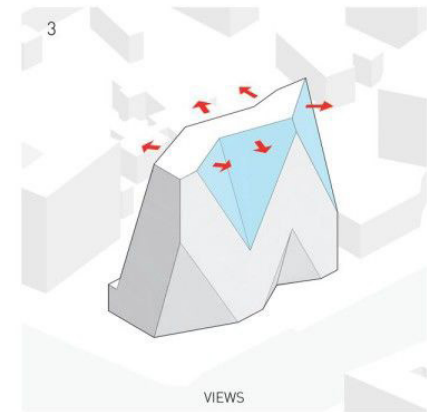
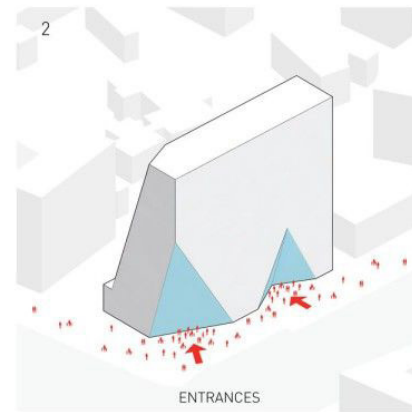


Red7

Cut



Based on the very unique architectural detail of the cuts in the building, I came up with the idea use simple geometric shapes and cut them.

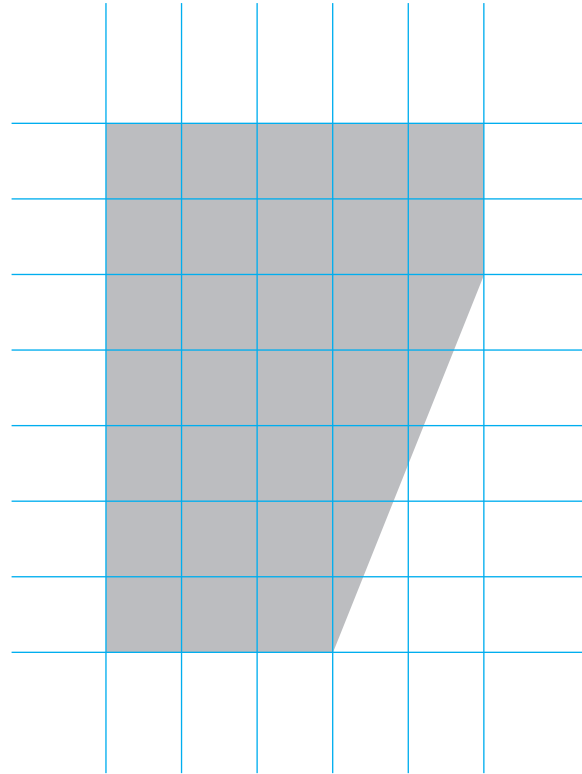


Red7

With only one cut a simple rectangular shape becomes a 7.



The shape is constructed based on a simple grid. This grid can also be used for different applications.



Red7

The type would be included
in a very reduced way.

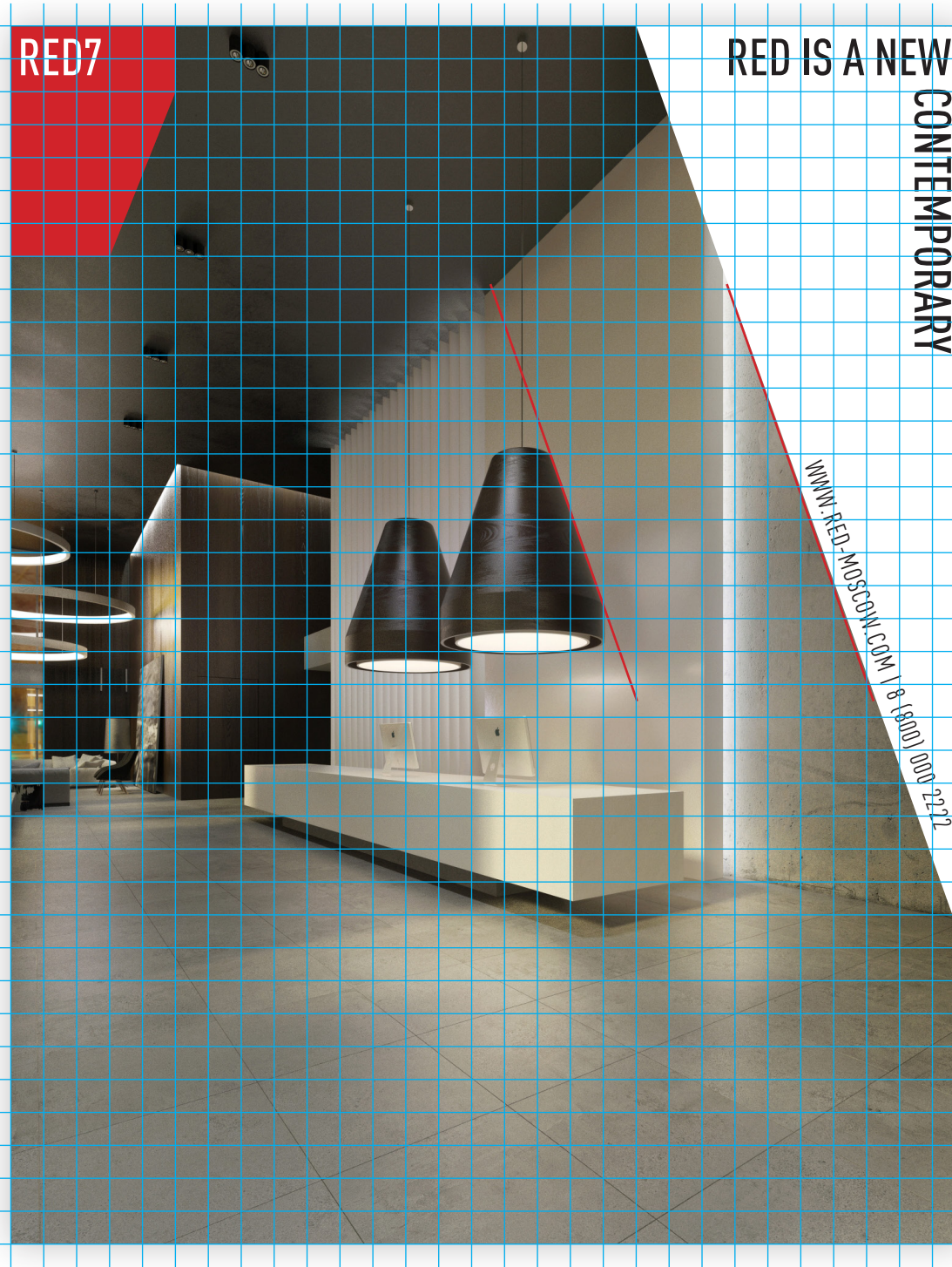
The logo consists of a red, trapezoidal shape with a diagonal cut on the right side. The text "RED7" is written in white, bold, uppercase letters in the top-left corner of the shape.

RED7

For the layout we could work with different cuts.



The layout has to be based on a grid system. It's possible to use angles aligned to elements from the image.



RED7

RED IS A NEW
CONTEMPORARY

WWW.RED.MOSCOW.COM | 8 (800) 000 2311

The layout has to be based on a grid system. It's possible to use angles aligned to elements from the image.

